



**BAUM**  
lined piping excellence

## **The Macomb Group is Built To Say Yes... With our new Lined Pipe Product Group and In-House Fabrication Services**

*Expanding on our long-term partnership with Baum America Corporation, The Macomb Group now provides in-house, made-to-order, fabrication services by factory trained personnel in spool sizes 1" thru 6".*

*Fabrication capabilities are located within our Midland, Michigan warehouse and serves ALL Macomb locations. These services are coupled with a full inventory of Baum Lined Fittings and Flanges as well as a product specialty service group ready to provide technical support and quotation assistance when needed.*

*Baum America is a manufacturer of plastic lined pipe, fittings, vessels, dip tubes, and expansion joints that uses PTFE, PFA, ETFE, PVDF or PP.*

**Want to learn more?**

**Contact us at:**

**[linedpipe@macombgroup.com](mailto:linedpipe@macombgroup.com)**



LINEDPIPE@MACOMBGROUP.COM

24/7 AFTER HOURS EMERGENCY: 586.693.6236 | MACOMBGROUP.COM



**BUILT TO SAY YES**

# In-House Custom Length Lined Pipe Fabrication

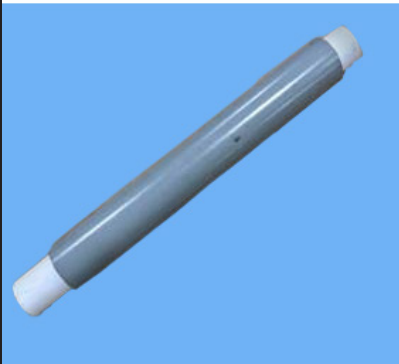
Lined pipe fabrication involves the use of a steel flaring machine referred to as a Conrac. Essentially this takes straight steel pipe and pushes the ends outward to create a steel flange face on both ends. Through a separate process the plastic liner is introduced into the steel stock and heated. It is then similarly flared to cover the steel flange faces on both ends, locking the liner into place. A finishing process allows for required quality checks and testing as well as the addition of any customer specific requests.

Custom Spools are provided in accordance with ASTM F1545-15

## The Baum Advantage:

- Paste Extruded PTFE Liner offering less permeation than other PTFE Manufacturing Techniques
- Smoother Surface for easier clean up and less organic growth
- Superior Tensile Strength and Elongation

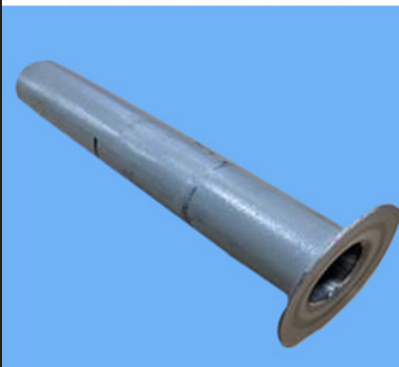
## Macomb Group/Baum Lined Pipe Project In-House Custom Length PTFE Spool Fabrication



Stock Steel with Liner



Conrac Flare



Completed Flare, one end



Completed Spool

**Also available from Baum:  
PVDF and PolyPro liner options as well as  
Expansion Joints, Nozzle Liners,  
Dip Tubes, and Spargers.**

*Also available from The Macomb Group... Lined Valve Product by Swiss Fluid*



LINEDPIPE@MACOMBGROUP.COM

24/7 AFTER HOURS EMERGENCY: 586.693.6236 | MACOMBGROUP.COM



**BUILT TO SAY YES**